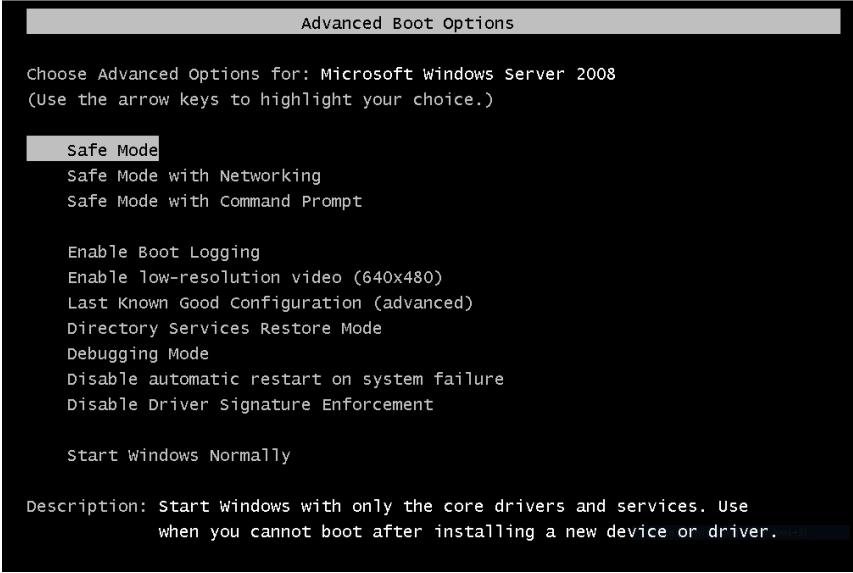


CET 753  
Lab Completion Sheet  
Chapter 12

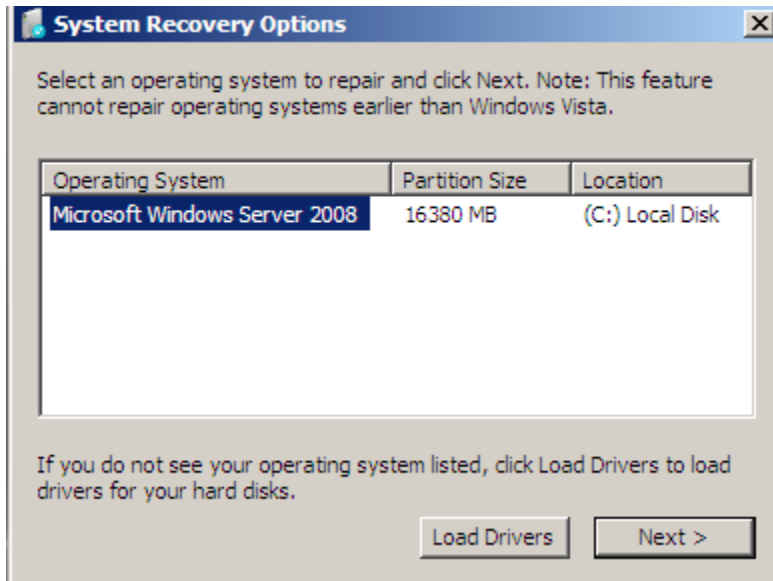
Name Michael Fischer

#	Page	Chapter/Activity	Status	Description
96	496	12-1		Booting into Safe Mode

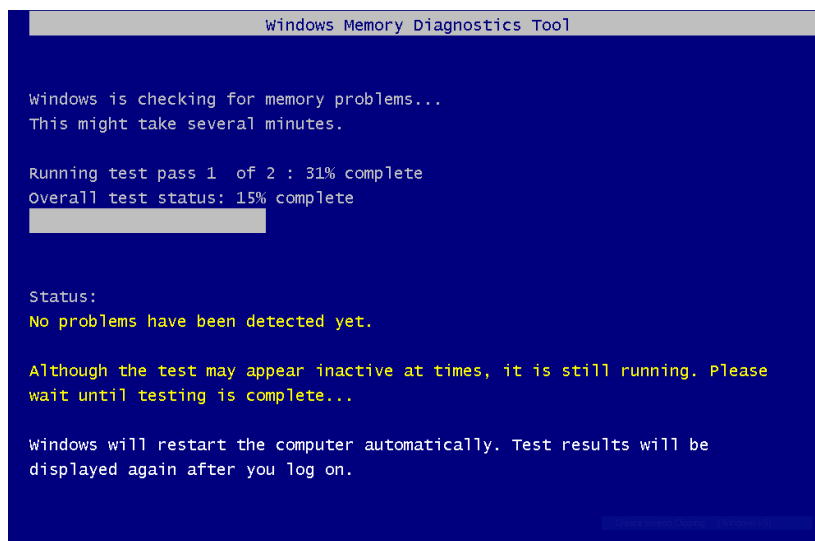
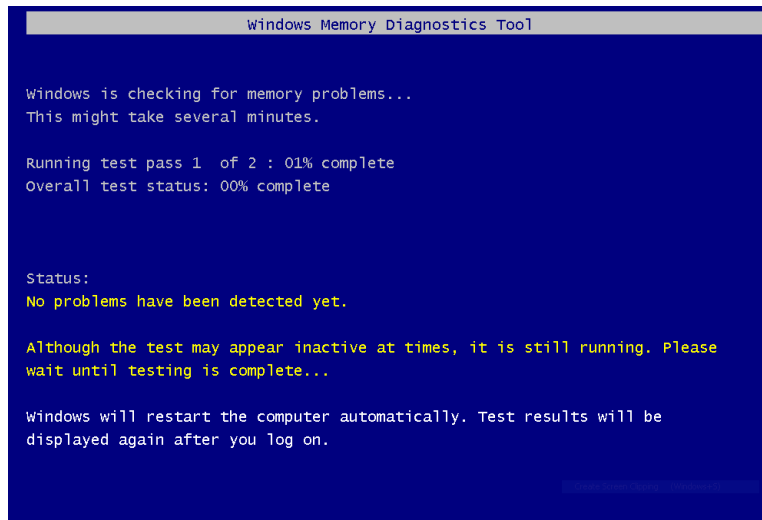
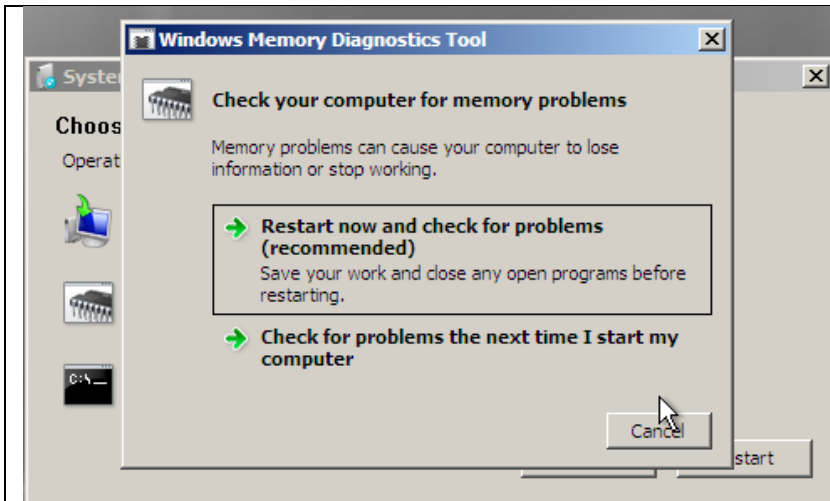
Screen Shot(s)	Documentation
	<p>Directions were followed as given in the textbook.</p>

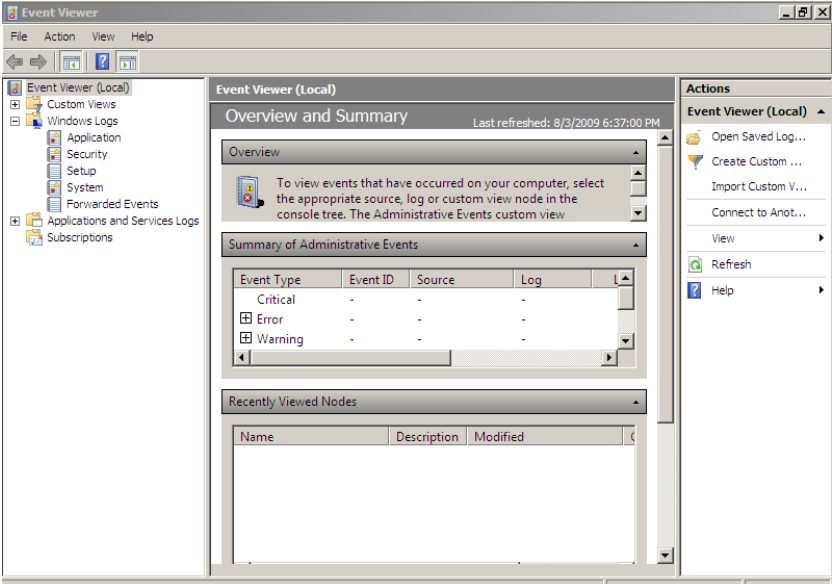
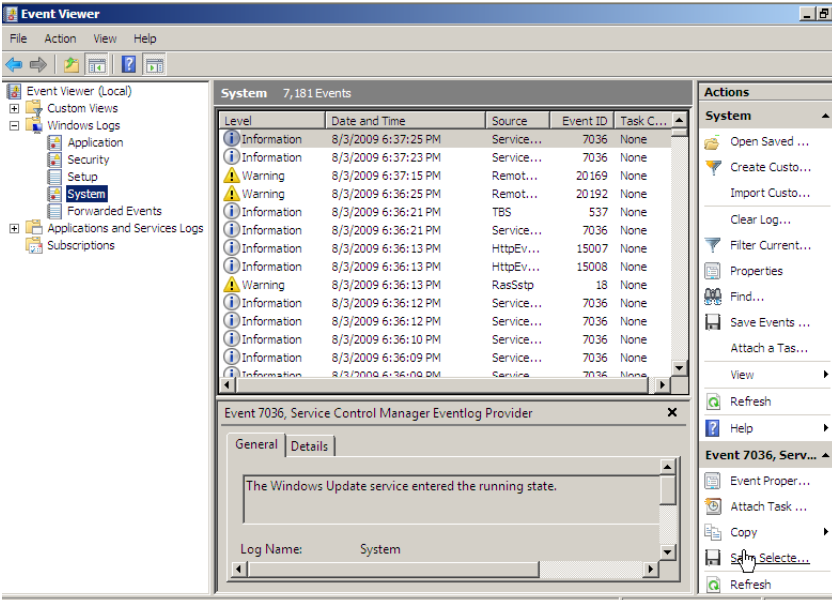
#	Page	Chapter/Activity	Status	Description
97	498	12-2		Performing Memory Diagnostics

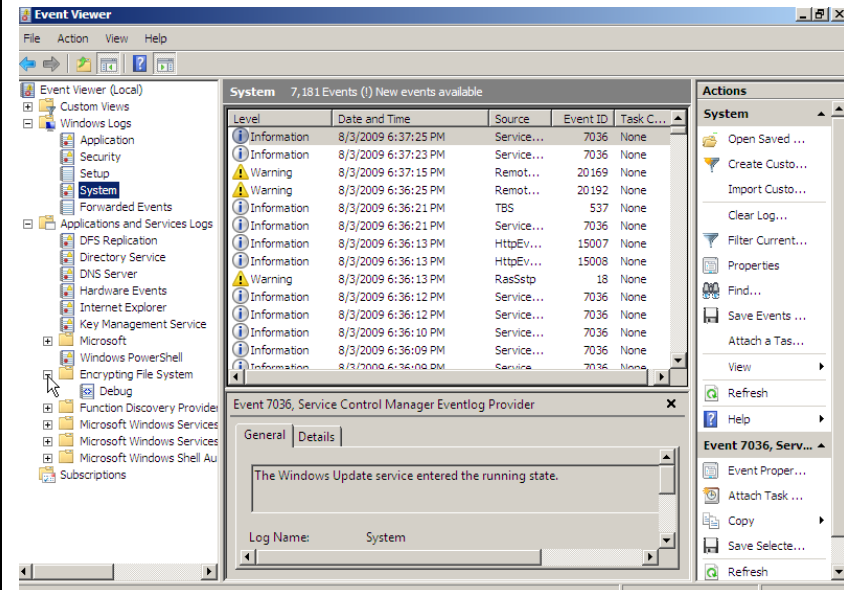
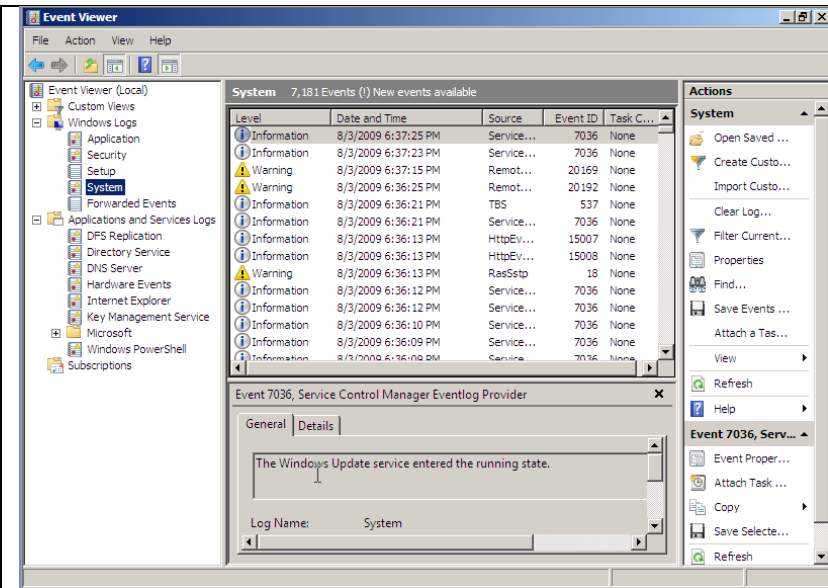
Screen Shot(s)	Documentation



Directions were followed as given in the textbook.



Screen Shot(s)	Documentation
 <p>The screenshot shows the Windows Event Viewer application. The left-hand pane displays a tree view with 'Event Viewer (Local)' expanded to show 'Custom Views', 'Windows Logs', and 'Applications and Services Logs'. The main pane is titled 'Event Viewer (Local)' and shows an 'Overview and Summary' section. Below this is a 'Summary of Administrative Events' table with columns for Event Type, Event ID, Source, and Log. The table lists 'Critical', 'Error', and 'Warning' events. A 'Recently Viewed Nodes' section is also visible at the bottom of the main pane.</p>	<p>Directions were followed as given in the textbook.</p>
 <p>The screenshot shows the Windows Event Viewer application with the 'System' log selected. The main pane displays a list of 7,181 events. The list has columns for Level, Date and Time, Source, Event ID, and Task Category. The events listed include various information and warning messages from sources like Service Control Manager, RemoteAccess, and TBS. Below the list, the details for 'Event 7036, Service Control Manager Eventlog Provider' are shown. The 'General' tab is active, displaying the message: 'The Windows Update service entered the running state.' The 'Log Name' is identified as 'System'.</p>	<p>Directions were followed as given in the textbook.</p>



**Log Properties - System (Type: Administrative)**

General | Subscriptions

Full Name: System

Log path: %SystemRoot%\System32\Winevt\Logs\System.evtx

Log size: 4.07 MB(4,263,936 bytes)

Created: Tuesday, July 28, 2009 12:27:41 AM

Modified: Monday, August 03, 2009 6:31:37 PM

Accessed: Tuesday, July 28, 2009 12:27:41 AM

Enable logging

Maximum log size ( KB ): 22016

When maximum event log size is reached:

- Overwrite events as needed (oldest events first)
- Archive the log when full, do not overwrite events
- Do not overwrite events ( Clear logs manually )

Clear Log

OK Cancel Apply

**Filter Current Log**

Filter | XML

Logged: Any time

Event level:  Critical  Warning  Verbose  Error  Information

By log Event logs: System

By source Event sources:

Includes/Excludes Event IDs: Enter ID numbers and/or ID ranges separated by commas. To exclude criteria, type a minus sign first. For example 1,3,5-99,-76

<All Event IDs>

Task category:

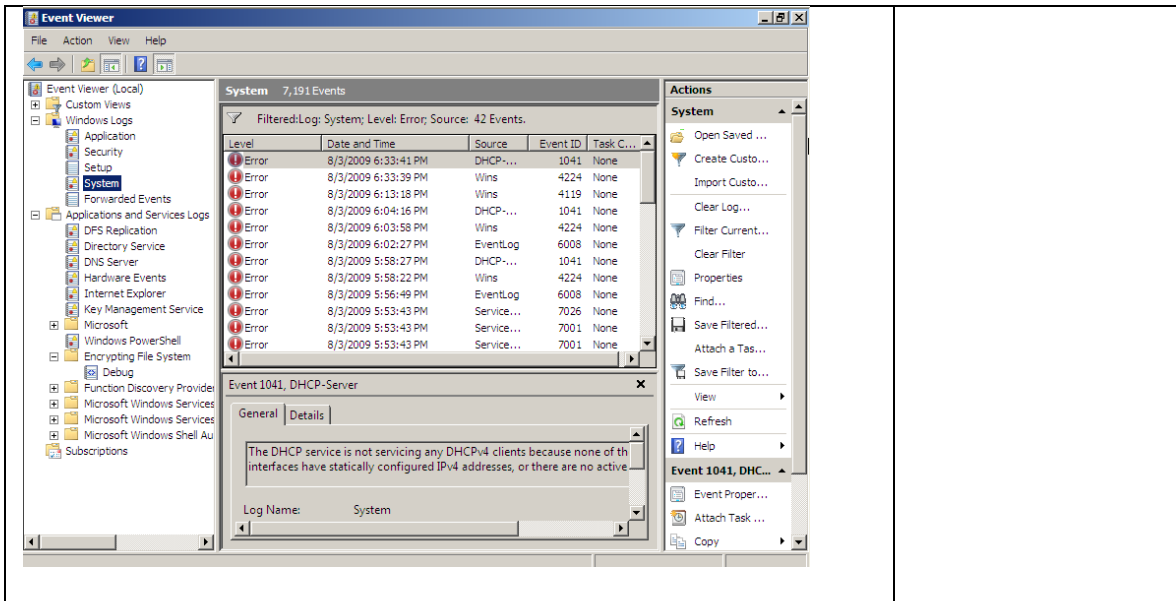
Keywords:

User: <All Users>

Computer(s): <All Computers>

Clear

OK Cancel



# Page Chapter/Activity Status Description  
 99 513 12-5 Using TCP/IP Connectivity Troubleshooting Tools

Screen Shot(s)	Documentation
<p>The first screenshot shows the NetBIOS Local Name Table for Local Area Connection 2 (IP: 169.254.7.241) and Local Area Connection (IP: 0.0.0.0). The table lists names like WIN-A31N648BAZZ&lt;00&gt;, MFCOMP, and WIN-A31N648BAZZ&lt;20&gt; with their types and registered status.</p> <p>The second screenshot shows the output of the command 'nbtstat -s', displaying network connections for Local Area Connection 3 (IP: 169.254.126.180), Local Area Connection 2 (IP: 169.254.7.241), and Local Area Connection (IP: 0.0.0.0), all showing 'No Connections'.</p>	<p>Directions were followed as given in textbook.</p>

```

Administrator: Command Prompt
UDP [::]:1812 *:*
UDP [::]:1813 *:*
UDP [::]:3702 *:*
UDP [::]:3702 *:*
UDP [::]:5355 *:*
UDP [::]:57829 *:*
UDP [::]:62089 *:*
UDP [::]:1:53 *:*
UDP [::]:1:51214 *:*
UDP [::]:1:64841 *:*
UDP [::]:1:64842 *:*
UDP [fe80::4db:3cad:3307:7eb4%12]:53 *:*
UDP [fe80::4db:3cad:3307:7eb4%12]:88 *:*
UDP [fe80::4db:3cad:3307:7eb4%12]:389 *:*
UDP [fe80::4db:3cad:3307:7eb4%12]:464 *:*
UDP [fe80::18c0:5491:27a1:7178%10]:53 *:*
UDP [fe80::18c0:5491:27a1:7178%10]:88 *:*
UDP [fe80::18c0:5491:27a1:7178%10]:389 *:*
UDP [fe80::18c0:5491:27a1:7178%10]:464 *:*
UDP [fe80::d88a:db2b:180:7f1%11]:53 *:*
UDP [fe80::d88a:db2b:180:7f1%11]:88 *:*
UDP [fe80::d88a:db2b:180:7f1%11]:389 *:*
UDP [fe80::d88a:db2b:180:7f1%11]:464 *:*
C:\Users\Administrator>

```

```

Administrator: Command Prompt
Ethernet adapter Local Area Connection:
    Connection-specific DNS Suffix . : Belkin
    Link-local IPv6 Address . . . . . : fe80::18c0:5491:27a1:7178%10
    IPv4 Address. . . . . : 192.168.2.7
    Subnet Mask . . . . . : 255.255.255.0
    Default Gateway . . . . . : 192.168.2.1

Tunnel adapter Local Area Connection* 8:
    Media State . . . . . : Media disconnected
    Connection-specific DNS Suffix . : Belkin

Tunnel adapter Local Area Connection* 11:
    Media State . . . . . : Media disconnected
    Connection-specific DNS Suffix . :

Tunnel adapter Local Area Connection* 12:
    Media State . . . . . : Media disconnected
    Connection-specific DNS Suffix . :
C:\Users\Administrator>

```

```

Administrator: Command Prompt
    Media State . . . . . : Media disconnected
    Connection-specific DNS Suffix . : Belkin

Tunnel adapter Local Area Connection* 11:
    Media State . . . . . : Media disconnected
    Connection-specific DNS Suffix . :

Tunnel adapter Local Area Connection* 12:
    Media State . . . . . : Media disconnected
    Connection-specific DNS Suffix . :

C:\Users\Administrator>ping 192.168.2.7

Pinging 192.168.2.7 with 32 bytes of data:
General failure.
General failure.
General failure.
General failure.

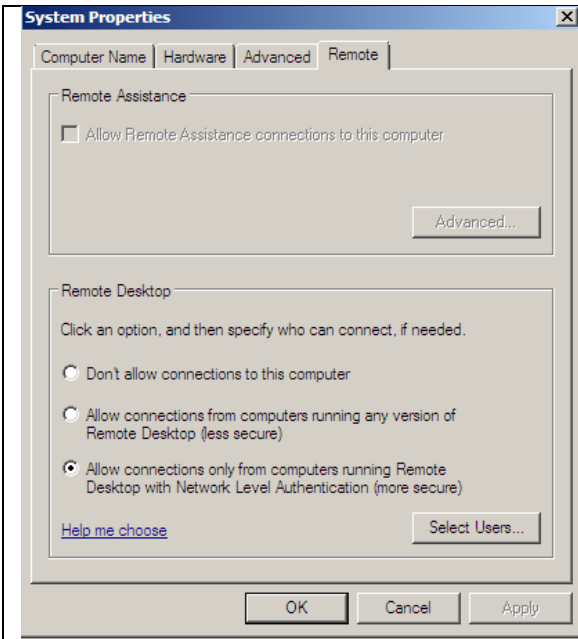
Ping statistics for 192.168.2.7:
    Packets: Sent = 4, Received = 0, Lost = 4 (100% loss),
C:\Users\Administrator>

```

#	Page	Chapter/Activity	Status	Description
100	517	12-6		Configuring to Enable Remote Access Through Remote Desktop

Screen Shot(s)	Documentation
----------------	---------------





Directions were followed as given in the textbook.

